

90°30'0"E

91°0'0"E

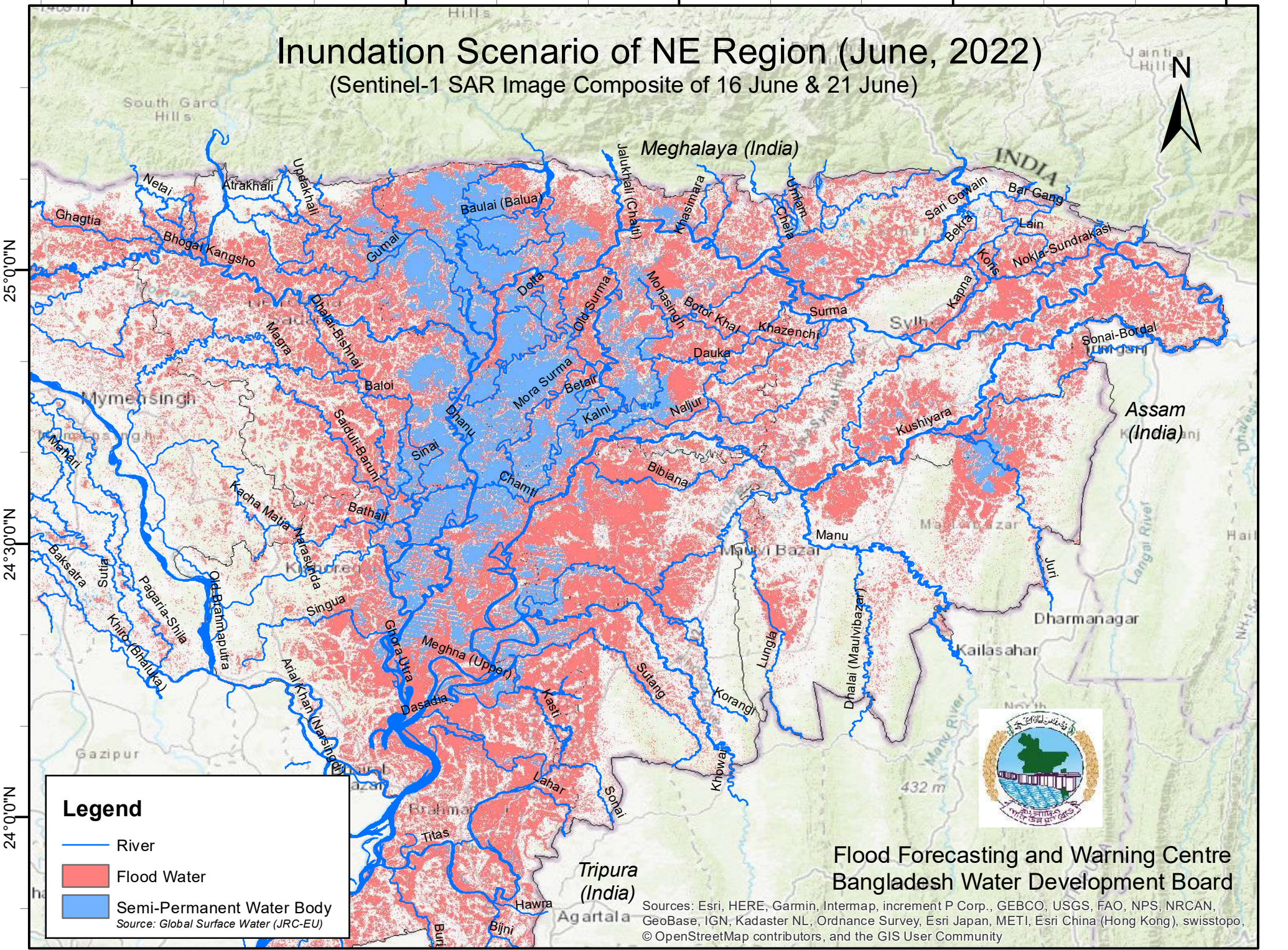
91°30'0"E

92°0'0"E




92°30'0"E

Inundation Scenario of NE Region (June, 2022)

(Sentinel-1 SAR Image Composite of 16 June & 21 June)



Legend

-  River
 -  Flood Water
 -  Semi-Permanent Water Body
- Source: Global Surface Water (JRC-EU)



Flood Forecasting and Warning Centre
Bangladesh Water Development Board

Sources: Esri, HERE, Garmin, Intermap, increment P Corp., GEBCO, USGS, FAO, NPS, NRCAN, GeoBase, IGN, Kadaster NL, Ordnance Survey, Esri Japan, METI, Esri China (Hong Kong), swisstopo, © OpenStreetMap contributors, and the GIS User Community